



Temora Hospital Redevelopment

Green Travel Plan

NSW Health Infrastructure

August 08, 2024

➔ The Power of Commitment



Project name		Temora Hospital Redevelopment					
Document title		Temora Hospital Redevelopment Green Travel Plan					
Project number		12600017					
File name		Temora Hospital Redevelopment Green Travel Plan					
Status Code	Revision	Author	Reviewer		Approved for issue		
			Name	Signature	Name	Signature	Date
S3	0	M Leigh-Lucas	C Steinbach		T Little		19/03/24
Final	1	M Leigh-Lucas	T Little		T Little		13/06/24
Final	2	M Leigh-Lucas	T Little		T Little		08/08/24

GHD Pty Ltd | ABN 39 008 488 373

16 Marcus Clarke Street, Level 7

Canberra , Australian Capital Territory 2601, Australia

T +61 2 6113 3200 | **F** +61 2 6113 3299 | **E** cbrmail@ghd.com | **ghd.com**

[Compliance statement]

© GHD 2024

This document is and shall remain the property of GHD. The document may only be used for the purpose for which it was commissioned and in accordance with the Terms of Engagement for the commission.

Unauthorised use of this document in any form whatsoever is prohibited.

Contents

1.	Introduction	1
1.1	Purpose of this report	1
1.2	Scope and limitations	1
2.	Background	1
2.1	Site location	1
2.2	Staffing levels	3
2.3	Redevelopment	3
3.	Existing travel options	5
4.	Recommendations	6

Table index

Table 1	Staffing data (daily)	3
---------	-----------------------	---

Figure index

Figure 1	Temora Hospital – site location	2
Figure 2	Temora Hospital current access arrangements	2
Figure 3	End-of-trip facilities and EV charging locations	4
Figure 4	400 metres walking distance from Temora Hospital	5
Figure 5	Temora bicycle paths	6

1. Introduction

The NSW Government has committed \$95 million to the Temora Health Service redevelopment, which will provide a high-quality contemporary health facility and ensure healthcare services are carefully planned to meet community needs now and into the future.

GHD has been engaged by NSW Health Infrastructure to deliver Building Services Engineering along with Acoustics and Traffic Engineering for the redevelopment. As part of the delivery, a Green Travel Plan (GTP) is required to complement the ESD initiatives proposed for the development. The GTP is contained herein.

1.1 Purpose of this report

The purpose of a GTP is to encourage the use of sustainable modes of transport and decrease the volumes of single occupancy vehicle trips to and from the Temora Hospital site. The benefits associated with these goals include:

- Reduced pollution and greenhouse gas emissions
- Promote healthy lifestyles
- Reduced traffic and traffic noise.

1.2 Scope and limitations

This report has been prepared by GHD for NSW Health Infrastructure and may only be used and relied on by NSW Health Infrastructure for the purpose agreed between GHD and NSW Health Infrastructure as set out in this report.

GHD otherwise disclaims responsibility to any person other than NSW Health Infrastructure arising in connection with this report. GHD also excludes implied warranties and conditions, to the extent legally permissible.

The services undertaken by GHD in connection with preparing this report were limited to those specifically detailed in the report and are subject to the scope limitations set out in the report.

The opinions, conclusions and any recommendations in this report are based on conditions encountered and information reviewed at the date of preparation of the report. GHD has no responsibility or obligation to update this report to account for events or changes occurring subsequent to the date that the report was prepared.

The opinions, conclusions and any recommendations in this report are based on assumptions made by GHD described in this report. GHD disclaims liability arising from any of the assumptions being incorrect.

2. Background

2.1 Site location

The Temora township is located 208km (by road) west north-west of Canberra, ACT. The Temora Hospital is located at the corner of Gloucester Street and Loftus Street, within the township of Temora, NSW (refer to Figure 1).

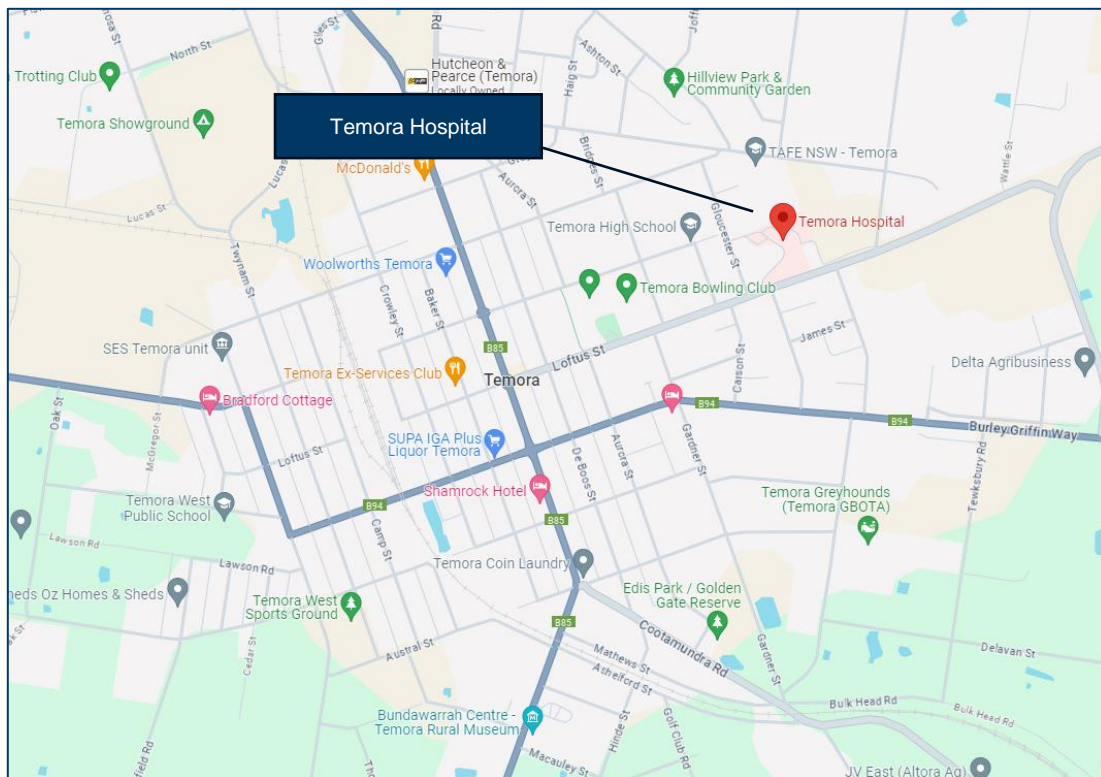


Figure 1 Temora Hospital – site location

Source: Google Maps modified by GHD

The Temora Hospital existing site access arrangements are displayed in Figure 2.



Figure 2 Temora Hospital current access arrangements

2.2 Staffing levels

At-grade parking is currently provided throughout the hospital site. Excluding the parking adjacent to the aged care facility, a desktop review indicates that there are approximately 80 parking spaces within the hospital grounds for workers and visitors.

Information provided by staff from Temora Hospital detailing (current) staffing numbers are provided in Table 1. The data reflects weekdays, as this is when peak staffing activity occurs.

Table 1 *Staffing data (daily)*

Type	Full-time	Part-time
Allied Health	10	4
Administration	5	-
Health Share	Morning shifts up to 6 Afternoon shifts up to 2	-
Mental Health	14	4
Asset	Up to 2	-
Nursing (including wards persons)	Monday to Friday Morning - 9 Evening -6 Night - 4	
Community Nurse	3	
Child and Family Nurse	1	1
Total	62	9

The data in Table 1 indicates that up to 62 full-time staff and nine part-time staff access/egress the hospital on a daily basis over multiple shifts.

Information provided by hospital staff indicates:

- The key shift change over times for clinical staff occurs between 1:30 pm and 3:30 pm on weekdays.
- Typically, there is enough parking at Temora Hospital to accommodate demand (staff and visitors), however, this is challenging on busy days, i.e. theatre days.

The proposed redevelopment will not result in an increase in staff or visitor numbers, and as such, 80 car parking spaces will be retained.

No electric vehicle (EV) charging spaces are currently provided within the Temora Hospital car park.

Under the current arrangement, all vehicles (including ambulances and delivery vehicles) access the hospital via Loftus Street and egress the hospital site via Gloucester Street.

2.3 Redevelopment

The redevelopment consists of a new hospital building to be built on the footprint of the existing hospital over two delivery stages. On-site vehicle movements will alter slightly as a result of the redevelopment. Staff and visitors will still enter the site from the original entry on Loftus Street and exit via the rearranged bi-directional entry/exit on Gloucester Street. However, the site will be serviced to the rear (north) of the hospital building by service vehicles, ambulances and fire brigade via the bi-directional entry/exit on Gloucester Street.

There will be no increase in traffic movement generated by the hospital redevelopment. Staff numbers will remain static, as shown in Table 1.

The redevelopment recognises the importance of green travel initiatives and will provide end-of-trip facilities for pedestrian and bicycle traffic to the site. End-of-trip facilities consist of staff showers, amenities and lockers, plus provision for the parking of 8 bicycles to promote cycling to the hospital.

Infrastructure to support fifteen EV charging points will be provided for the Murrumbidgee Local Health District (MLHD) fleet vehicles as part of the redevelopment and in support of the MLHD's target of a 50 percent reduction in emissions by 2030 and net zero emissions by 2050.

Figure 3 shows the locations of the proposed end-of-trip facilities and the EV charging point locations.

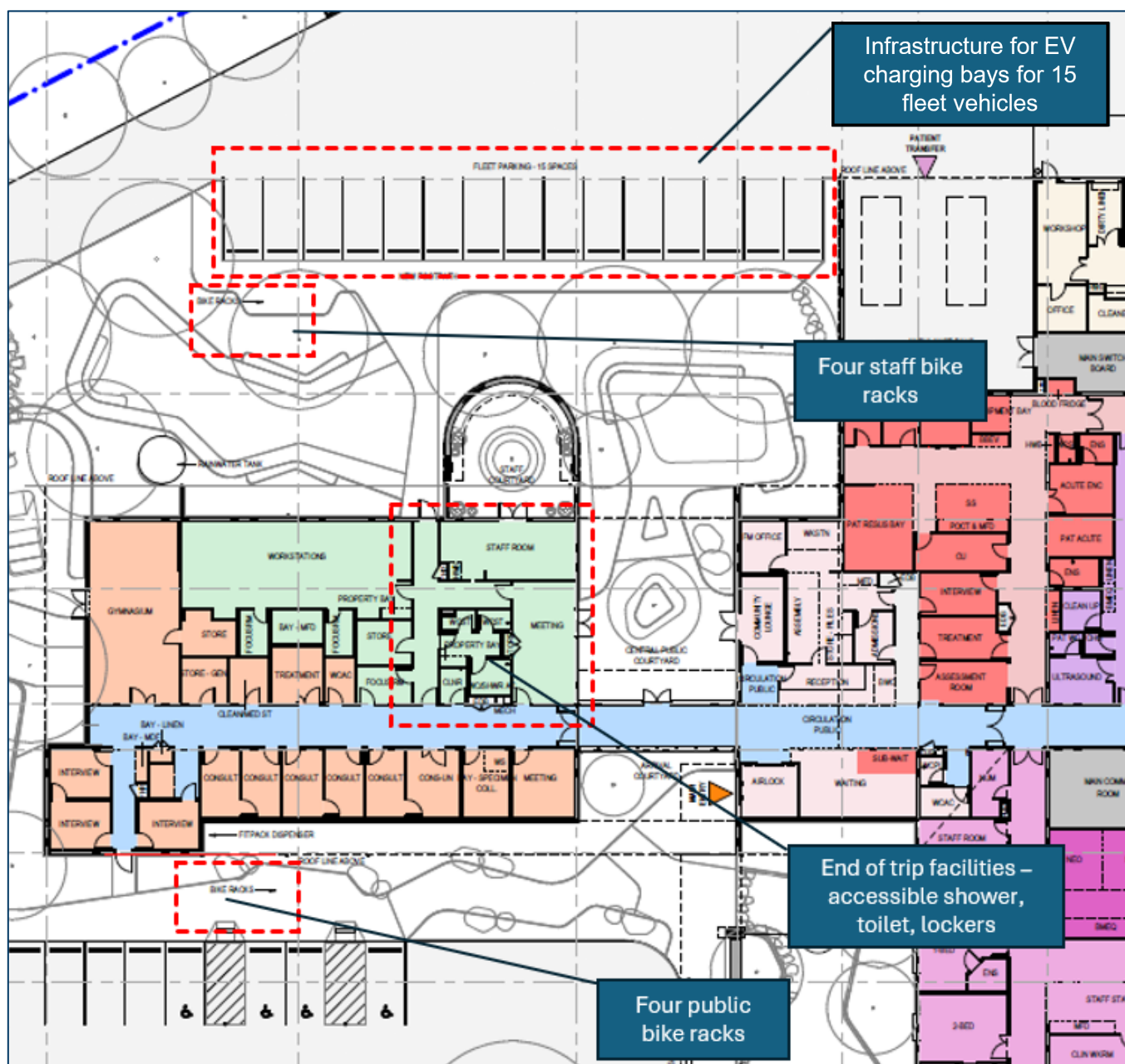


Figure 3 End-of-trip facilities and EV charging locations

3. Existing travel options

There are currently no public transport services operating in proximity to the hospital site.

Typically, 400 metres is considered a comfortable walking distance. The area of Temora within 400 metres of the hospital is displayed in Figure 4.

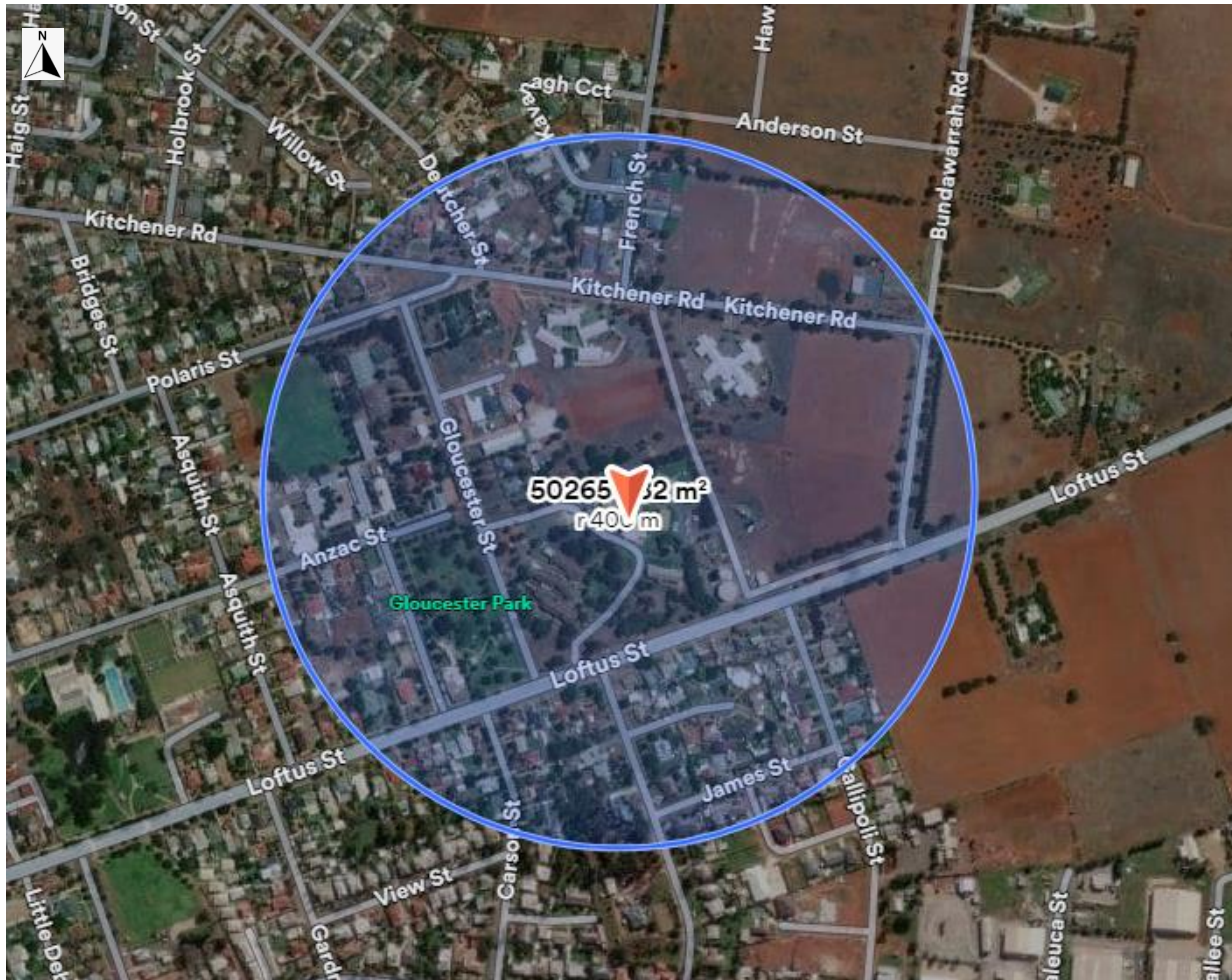


Figure 4 400 metres walking distance from Temora Hospital

A review of the pedestrian facilities within the walking catchment indicates that footpaths are provided on:

- The southern side of Loftus Street
- The eastern side of Gloucester Street
- Both sides of Anzac Street.

The majority of the Temora Township is within two kilometres of the hospital, which is a relatively comfortable cycling distance.

The TfNSW Cycle Way Finder identifies a number of streets within Temora as being “general roads”, which is identified as a road where bicycles share space with vehicles, buses or parked cars. This includes Loftus Street, which provides access to the hospital.

There are two sections of shared paths (refer to Figure 5) within Temora, to the north and west of the hospital. Additionally, the Temora Township is relatively flat, supporting a comfortable cycling environment.

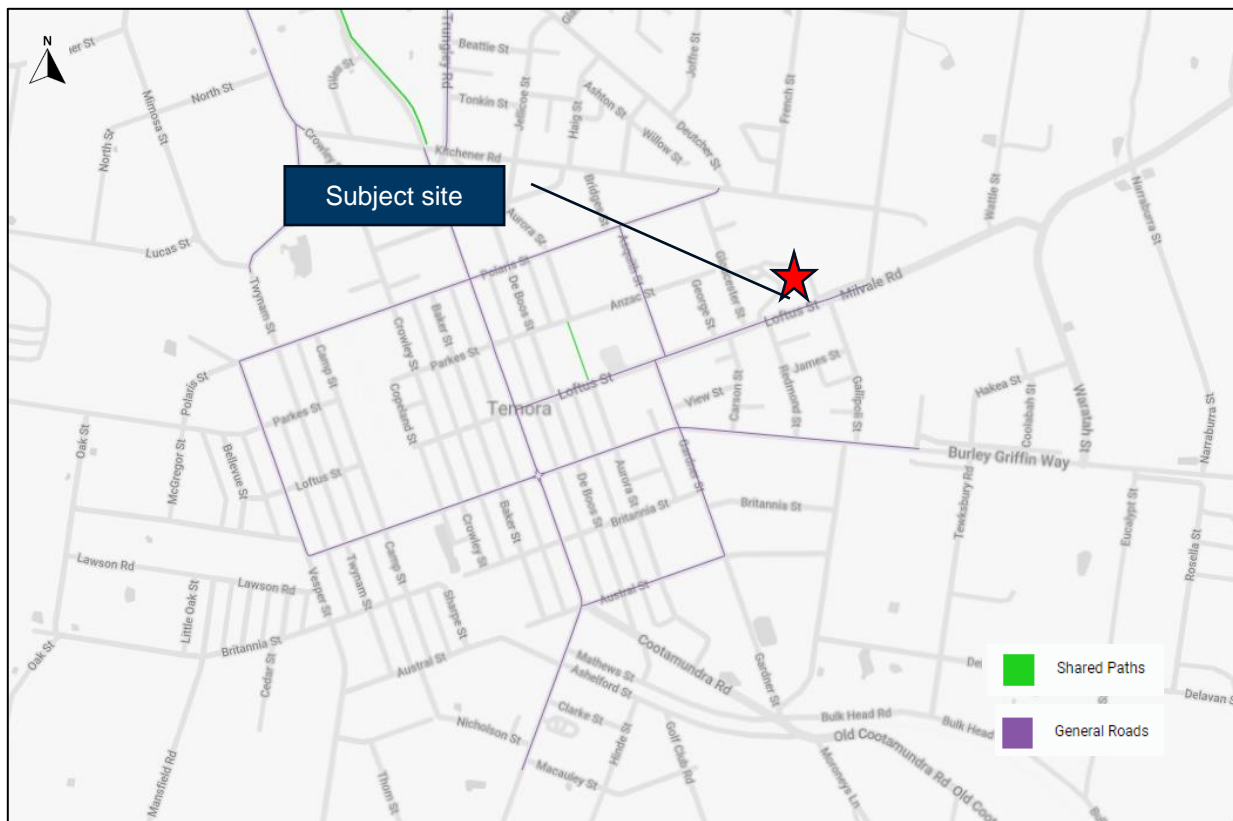


Figure 5 Temora bicycle paths

Source: TfNSW Cycleway Finder

4. Recommendations

In determining recommendations for Temora Hospital, the following is noted:

- Patients at the hospital are unlikely to walk or cycle due to the likelihood of requiring medical attention or supporting someone with a medical condition.
- Staff at the hospital can be subject to the variances of shift work and may not be in a regular work routine that promotes routine walking or cycling to work.
- There may be opportunities for hospital staff and visitors residing in Temora to cycle rather than drive, which is supported by the provision of associated end-of-trip facilities.
- There may be opportunities for staff to carpool
- The electrification of the MLHD fleet vehicles promotes green travel within the MLHD.

The **recommended** key GTP actions are as follows:

- Establish a carpooling system to reduce single occupancy, including:
 - Maintain a database of staff residential addresses
 - Inform staff who live in proximity to each other
 - Provide priority parking spaces for individuals who carpool.
- Promote cycling

- Provide additional bicycle parking, showers, lockers and changeroom for staff (provided for in the redevelopment)
- Prepare maps showing the main cyclist routes to and from the hospital
- Promote sustainable transport events such as Ride-to-Work days.

Additional GTP initiatives could include:

- Apply a GTP coordinator to manage and promote the plan.
- Liaise with Temora Shire Council and TfNSW to make a case for the implementation of public transport options to the proximity of the Temora Hospital site.
- Liaise with Temora Shire Council to make a case for implementing improved cycling connections between the hospital and the wider township.
- Undertake a staff information session to outline sustainable travel and carpooling options.
- Monitor the GTP through meetings and annual travel surveys.
- Review and update the plan annually, as required.

